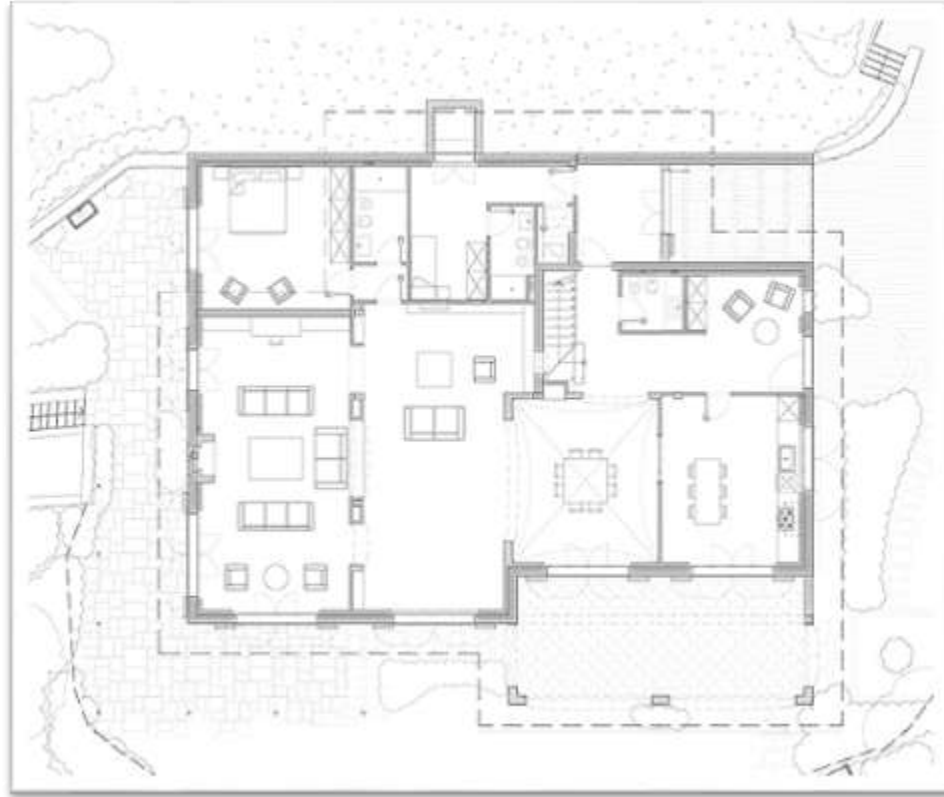


G2M  
SISTEMI



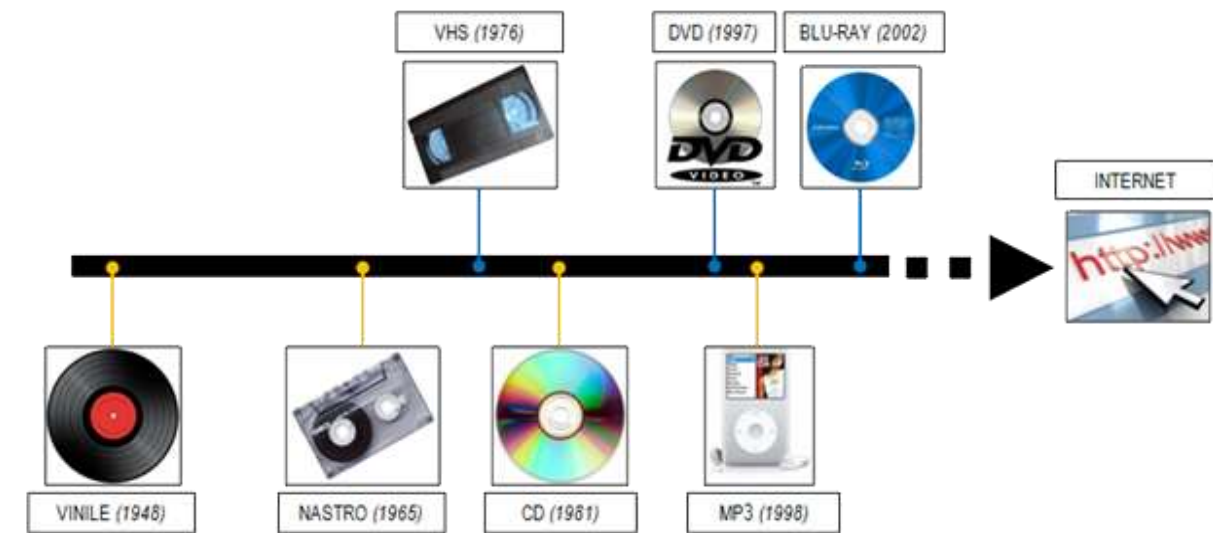
DELIVERING the  
FUTURE.  
TODAY.





Entertainment and Home Automation, like all technology-dependant businesses, is always evolving and transforming. With each passing year we see a steady improvement in picture and sound quality, the birth of new video and audio standards, multiple devices interactions and the unrelenting penetration of Internet and its unlimited possibilities. Anything that we might now see as science fiction may very well be available in a few years.

Alongside the technical advancements there is more interest and curiosity toward this industry. Users have learned to enjoy the new forms of entertainment, getting more demanding for technology as well as aesthetics. Not only that, but *Domotics* (and the automation industry in general) is getting enthusiastic feedbacks on power saving, security, innovative services and accessibility.



rendering and final result

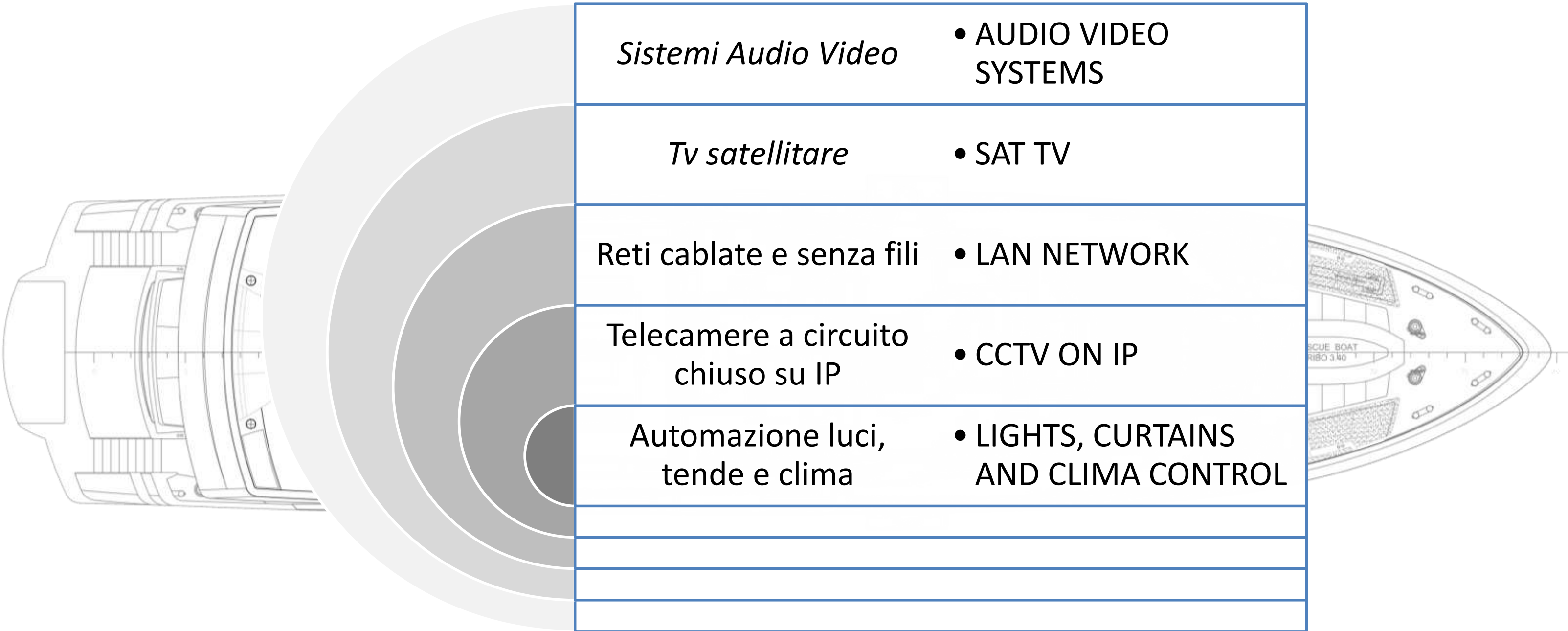


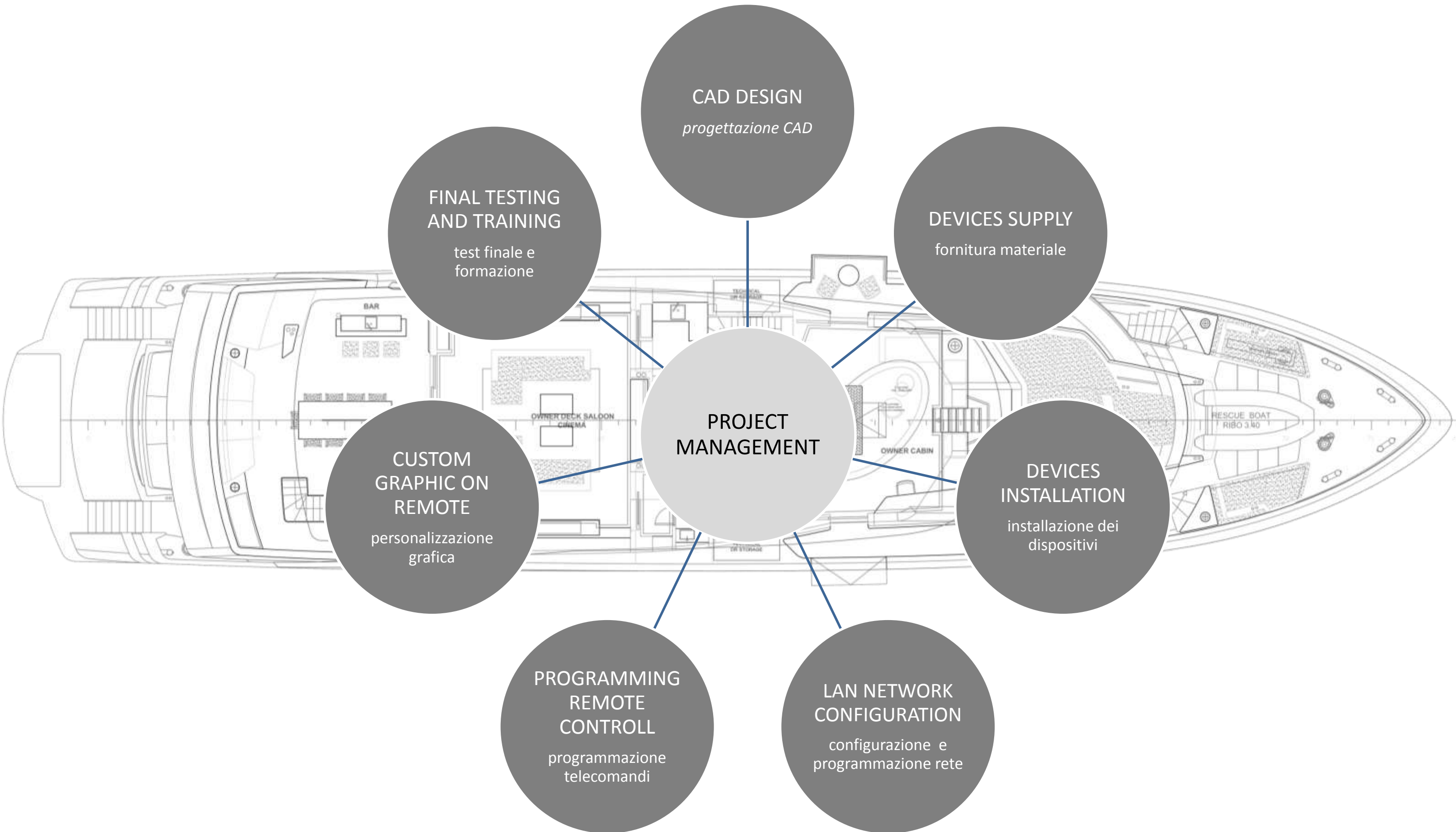
*Il settore dell'intrattenimento e della domotica, come tutti quelli governati dalla tecnologia e dall'elettronica, è in continuo sviluppo ed evoluzione.*

*Si assiste ad un costante miglioramento delle applicazioni TV e Cinema, alla nascita di nuovi formati e supporti per l'audio, alla progressiva integrazione tra apparecchi e all'interazione sempre più spinta con la rete e le sue innumerevoli potenzialità.*

*Tutto ciò che oggi sembra futuristico diventa possibile in pochi anni.*

*Parallelamente al miglioramento tecnologico, una crescente attenzione è stata rivolta verso questi settori. Gli utenti hanno imparato ad apprezzare le varie forme di intrattenimento, mostrandosi sempre più esigenti per quanto riguarda estetica e qualità tecniche. Inoltre lo sviluppo della domotica (e dell'automazione in generale) sta avendo delle significative ripercussioni nei campi del risparmio energetico, della sicurezza, dell'accesso a nuovi servizi e della diffusione di contenuti.*







G<sup>2</sup>M Sistemi is a resourceful and dynamic company, with a keen eye on the innovation the entertainment market has to offer, introducing itself as a consultant for the world of AV entertainment and home automation, a business that is due to become even more popular as technology progresses.

Active since the early 2000 in the Luxury Yachts segment, its founding members have worked in key companies where they developed their own know-how to further their background in the electronic, aeronautic and software industry.

Working with integration is thinking and suggesting solutions that meet and exceed the expectations of a client. Steady technological improvement, innovative solutions, high-end equipment and components, simplicity though customization, power saving "green" technology: all these key elements make G<sup>2</sup>M Sistemi avant-garde in its business markets:

- G<sup>2</sup>M Sistemi **DESIGNS** with high quality audio and video equipment, easy to hide or pleasant to the eye.
- G<sup>2</sup>M Sistemi delivers **SOLUTIONS** with **INTEGRATED SYSTEMS**, either distributed or centralized, thought to enhance performances of each single device integrated into an harmonic and operational whole.
- G<sup>2</sup>M Sistemi applies the same philosophy to **LIGHT SCENES**, static or dynamic, not limited to simple fixtures that go on or off.
- G<sup>2</sup>M Sistemi deploys its full know-how through **INTERACTIVE CONTROL PANELS** to manage home theatre, music, curtains, lights, HVAC, surveillance and anything that can be interacted with.



G<sup>2</sup>M Sistemi è una realtà intraprendente e dinamica sempre attenta all'evoluzione del mercato e alle nuove tecnologie; si propone come interlocutore importante per il mondo dell'intrattenimento Audio/Video e dell'Automazione.

Attivi sin dalla prima metà degli anni 2000 nel mercato del Luxury Yacht all'interno di aziende leader del settore, i soci fondatori hanno sviluppato un proprio know-how grazie anche ad importanti background professionali acquisiti nell'industria dell'elettronica, aeronautica e dello sviluppo software.

Lavorare nel mondo dell'integrazione significa vendere **SOLUZIONI**, non prodotti. Questa non è un'azienda dove acquistare componenti hi-fi o tv, ma uno studio di progettazione dove gli apparecchi (dispositivi Audio/Video, corpi illuminanti, sistemi di controllo, etc.) vengono studiati, scelti e "amalgamati" per fornire sistemi dalle alte prestazioni, funzionali, flessibili, secondo le esigenze del committente.

- G<sup>2</sup>M Sistemi **PROGETTA** l'utilizzo di Audio e Video di qualità, di oggetti di design e di dispositivi facilmente occultabili.
- G<sup>2</sup>M Sistemi fornisce **SOLUZIONI** con **SISTEMI INTEGRATI**, locali o centralizzati, studiati per esaltare le performance del singolo componente all'interno di un insieme armonico e funzionale.
- G<sup>2</sup>M Sistemi applica questa filosofia anche nella realizzazione di **SCENARI LUMINOSI**, statici o dinamici che siano, senza limitarsi nella semplice proposta di "luci" che si accendono e spengono.
- G<sup>2</sup>M Sistemi trova la sintesi del proprio know-how tramite lo sviluppo di **PANNELLI DI CONTROLLO INTERATTIVI**, attraverso i quali gestire tv, musica, tende, luci, climatizzazione, videosorveglianza e quant'altro sia possibile integrare.

### Values / Valori dell'azienda

- Skill / Competenza
- Experience / Esperienza
- Love for technology / Passione per la tecnologia
- Flexibility / Flessibilità operativa
- Direct cooperation with customers / Collaborazione

### Features of our systems / Caratteristiche dei Sistemi

- Reliable / Affidabilità
- Robust / Robustezza
- Functional / Funzionalità
- Easy to use / Semplicità d'uso
- Aesthetic / Attenzione per l'estetica

### Markets and Activities / Attività

- AV Systems / Sistemi Audio Video
- Satellite and Cable TV / TV Terrestre e Satellitare
- Wired and Wireless Networking / Reti Cablate e senza fili
- CCTV and surveillance / CCTV e sistemi di videosorveglianza
- Conference and Meeting Rooms / Sale riunioni e conferenze
- Lighting Automation / Automazioni e luci
- Home Automation / Domotica



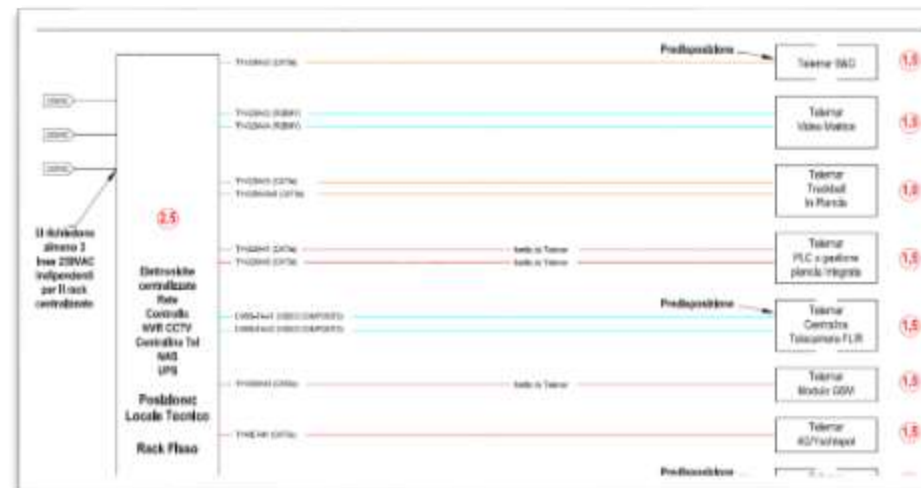
### Preliminary actions

Analysis and evaluation of specifics to deliver multiple solutions, prototype simulations and eventual trade-off, either internal or coordinated with the customer. This preliminary phase is also used to generate a general planning (time schedules, costs) of the project activities.



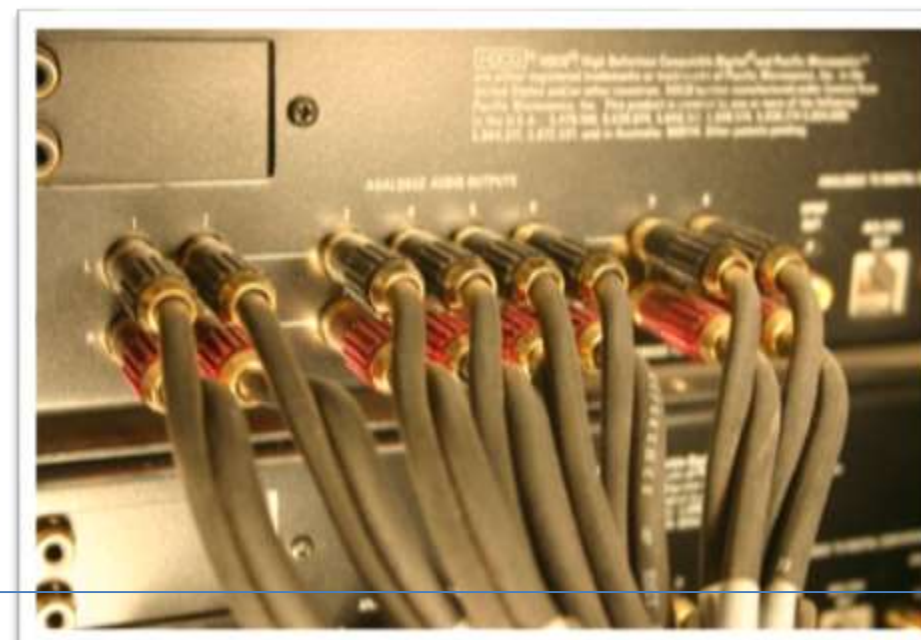
### Project Development

As the general design is finished, we proceed with detailed schematics for cable pulling, device positioning and wiring, and additional project specifics (cooling systems, custom parts or devices, etc.). All selected devices are filed in a work-list to keep track of acquisition, shipping and installation progress.



### Installation

Preliminary cable check, wiring preparation, device assembly and connection to external interfaces (power supply, third-party LANs, lighting, etc.) are the main stage of the production process. These activities are performed with extreme attention to details and in respect of all safety requirement.



### Fase preliminare

Consiste nell'analisi e valutazione delle specifiche, identificazione di una o più soluzioni funzionali, simulazioni attraverso prototipi ed eventuale trade-off interno o con il cliente. In questa fase si prepara anche la pianificazione generale (tempi, costi, attività) della commessa.

### Sviluppo del progetto

Una volta definito il sistema nella sua forma generale, si procede con la progettazione di dettaglio dei cablaggi, connessioni, collegamenti, posizione apparecchi e necessità accessorie (raffreddamento, parti custom, etc.). Parallelamente si crea una work-list che raccoglie tutti i prodotti scelti per consentire la gestione del loro approvvigionamento e spedizione al cliente.

### Installazione

Le attività di controllo del cablaggio, preparazione dei connettori, assemblaggio apparecchi e collegamenti alle interfacce esterne (rete elettrica, luci, etc.) costituiscono la parte centrale del processo di installazione. Tutte queste operazioni vengono eseguite con la massima professionalità, cura dei dettagli e nel rispetto delle norme di sicurezza.



**Software Development**

Control software and graphic user interface (GUI) allow the user to fully experience the entertainment system, providing intuitive interaction with all the installed devices as well as third-party interfaces like HVAC control, automated blinds and curtains, lighting. Reliability and response are perks of our design philosophy; each software is custom designed to identify the perfect blend between system specifications and customer requests.

**Final Testing and Commissioning**

The last part of the development process: system performances are evaluated and adjusted with run-time calibrations and measures; control interface undergoes multiple operational tests to ensure everything runs smooth and quickly: everything is carefully recorded in accurate testing forms, which will be delivered along the rest of the project literature. The final users will then be guided on a training tour of the system features.

**After-Sale Support**

Quick feedback and problem solving skills are the key to customer satisfaction, and after-sale support is an important part of our relationship with our clients. G<sup>2</sup>M Sistemi has developed solutions for remote system monitoring and fault diagnosis, enhancing the standard online and telephone support. Carefully optimized activity planning and anticipated diagnosis means on-site service calls are quickly dealt with.



**CENTRAL AND NORD AMERICA PARTNER**



**Sviluppo Software**

*Il software e l'interfaccia grafica rappresentano lo strumento per sfruttare appieno, ma con la massima intuitività, le capacità del sistema, permettendo inoltre l'interazione ed il controllo di dispositivi e sistemi esterni (climatizzazione, tende, etc.). Si presta la massima attenzione all'affidabilità e immediatezza del controllo; per questo ogni software viene pensato e sviluppato come giusto compromesso tra le caratteristiche del sistema e le esigenze specifiche del cliente.*

**Controllo e Collaudo Finale**

*La parte conclusiva del processo: si verificano le prestazioni del sistema, si effettuano le calibrazioni finali, si valuta la funzionalità del software. Il tutto viene seguito e registrato tramite apposita documentazione. Segue la fase di training al cliente e consegna della documentazione di progetto (disegni, manuali, istruzioni, etc.).*

**Supporto Post-Vendita**

*Costituisce una parte importante della collaborazione con il cliente, in quanto permette di fornire indicazioni ed aiuto in caso di problemi o di ulteriori richieste. G<sup>2</sup>M Sistemi ha sviluppato ed implementato idee per il monitoraggio a distanza degli apparati e la diagnosi dei guasti, correlando questa funzione al supporto on-line e telefonico e dimostrando sempre una pronta risposta in caso di necessità di intervento on-site.*



2004  
2015

List of project in which G2M Sistemi personnel has been involved in managing, designing, building and programming activities in their previous work experience

BENETTI LEGEND – Entire Line	CRN C122 – Romance
BENETTI TRADITION – Entire Line	CRN 43#01 – Emerald star
BENETTI FB231 – Ambrosia III	CRN 43#02 – Hana
BENETTI FB239 – St David (ex Xanadu)	CODECASA C112 – Moneikos
BENETTI BC112 – Quest R (ex Quest)	CODECASA F67 – Regina d'Italia
BENETTI BV11 – Lady Sheila	CODECASA F68 – Ferdy
CRN 128V4 – Sima	CODECASA F69 – Family Day (ex Bellissima)
CRN 128V5 – Lady Belmor	AZIMUT 98#35 – Rahil
CRN C119 – Abilty	AZIMUT 103#16 – Gogamigoga
CRN C120 – GiVi	MONDOMARINE – Tribù

List of main project in which G2M Sistemi has been or is involved in up to July 2015

BSD 105RS	VSY – Refit Cristiana
SAN LORENZO 92#31	PERINI C na / 53 – Refit Jasali II
SAN LORENZO 92#36	PERINI C2034/56– Refit Burrasca
SAN LORENZO SL86#650	LEOPARD – Refit 7 yachts
MAIORA 215#24	JADE YACHT – Refit Amadeus
MAIORA 225#24	ROSSI NAVI - Refit South
AB YACHT 145#182	BENETTI BC 123 - Refit Tanusha
OVERMARINE 94#03	BENETTI BT 006 – Refit Event (ex Elena1)
MONDOMARINE C28#01	BENETTI BT 19 – Refit Carlamaria
NCA Tecnomar FMY55#01	FEEDSHIP – Refit Tanusha (ex Pestifer)
SAN LORENZO SERVICE : Refit and maintenance on ALL second hand yachts	FEEDSHIP – Refit Trident
OVERMARINE SERVICE: Refit and maintenance on ALL second hand yachts	OVERMARINE 105#28 – Refit Platinum I
SEVEN STARS – Refit Ornella	OVERMARINE 130# 16 - Refit Platinum II
	OVERMARINE 108#08 - Refit Agata
	CODECASA F67 – Refit Regina d'Italia

**2014**  
213'11" ft



**T R I D E N T**

**To whom it may concern**

I've been relying on G2M for my system integration needs for nearly 4 years now. I'm currently working with a fleet of 10 yachts, 2 of which have refits/upgrades being done by G2M, MY Trident, a 65m Feadship out of RVL, and MY Mustique (formerly Mia Elise) a 55m out of Trinity Yachts in the US. All past projects I've worked on with the G2M team were huge successes, thanks to their professionalism and expertise. I have full confidence in these guys, they've earned it, and I will continue to work with, and recommend them.

Best regards,

*Nicholas Medford*  
Nicholas Medford  
ITO  
MY Trident

[www.titanfleet.com](http://www.titanfleet.com)



79, Avenue des Freres Roustan, 06220 Golfe Juan, France.

**2013**  
173'88" ft



Viareggio, 10 January 2013

To whom it may concern,

I have appreciated the professionalism and technical expertise of the people at G2M Sistemi when they were working in Tower Systems, the subcontractor for the Entertainment System on M/Y Rahil, where I was the Captain up to 2012. The good collaboration with them convinced me to stop dealing with Tower Systems and require the support of G2M Sistemi for all that concerns maintenance and upgrade of the AV system of the yacht.

Their assistance has always been prompt and efficient, keeping the AV System and its remotes fully operational and providing complete and detailed technical documentation when they were asked to perform upgrades or replace parts of the system.

Now being Captain of M/V South, I recommended G2M Sistemi to the management company of the yacht, trusting in their ability to take over the management of a very complex entertainment system and guarantee a reliable technical assistance, and all this expectations have been confirmed during this year by the excellent support provided by them. Especially powerful is the remote assistance service they set up and perform to the yacht.

Best regards,

Mario Lodovico Salani  
MV "South" Master  
Mob.:+39 335 712 9080  
[mvsouth@gmail.com](mailto:mvsouth@gmail.com)



2013  
213'3" ft

January 20, 2013

To whom it may concern:

As Chief Engineer of Motor Yacht Ambrosia, I have had the pleasure of knowing G2M SISTEMI from 2010.

During the past 3 years we received their support for the Audio, Video and Interior Automation for maintenance, repair and system updates.

The company offers top-notch quality, service and rates. Across the board, we were always pleased with their work.

I specially want to point out their Remote Assistance Services; we had received on time, correct support all the times we requested it, with the necessary patience and understanding to achieve the solution even when they needed to deal with non-specialized people from our side.

We have already successfully finished in our Yacht, the first step in the update of the whole Audio-Video-Interior Automation System. From the planning of the project to the delivery of the materials and the support for commissioning everything went swiftly and smoothly.

I can confidently recommend G2M SISTEMI as a solid and reliable supplier; they are experts in their field.

Best regards



Chief Engineer Pablo Zunino

Motor Yacht Ambrosia

2013  
99'0" ft

**Da:** Steve Cable [<mailto:steve@williamsandfamily.com>]

**Inviato:** giovedì 17 gennaio 2013 01:15

**A:** Giovanni Nucatola

**Oggetto:** Recommendation - G2M

To whom it may concern,

Giovanni Nucatola / G2M Sistemi have been looking after the entertainment system network and data network on our vessel for over 4 years. Giovanni was initially involved with the vessel during construction and first year services with Tower Systems. During the past 4 years G2M has provided a major upgrade to the data network on the vessel which has resulted in greater reliability including installing UPS units to provide POE, they have also upgraded the entertainment system, replacing the cumbersome and unreliable Crestron handsets with iPad and iTouch units, relocated the Kaleidescape server which was constantly failing due to heat related stress.

On all occasions we have had to deal with G2M they have provided excellent service and good technical solutions. Where a problem has existed they have responded promptly to resolve the issue either onsite or via remote management access.

Regards

Steve Cable

M/Y Carlamaria

+61416272124

G<sup>2</sup>M Sistemi nasce a Pisa dalla passione e dallo spirito di iniziativa dei suoi fondatori.

Pensata come una azienda dinamica e reattiva alle esigenze del mercato, opera sia in campo nazionale che internazionale.



Via di Tegulaia, 3/C  
56121 Ospedaletto  
Pisa, Italy

Tel.: +39 050 3191979  
Fax: +39 1782740542  
E-mail: [info@g2msistemi.it](mailto:info@g2msistemi.it)



[www.g2msistemi.it](http://www.g2msistemi.it)



Delivering the future. Today.

